



CORONADO
AT DELTA SHORES



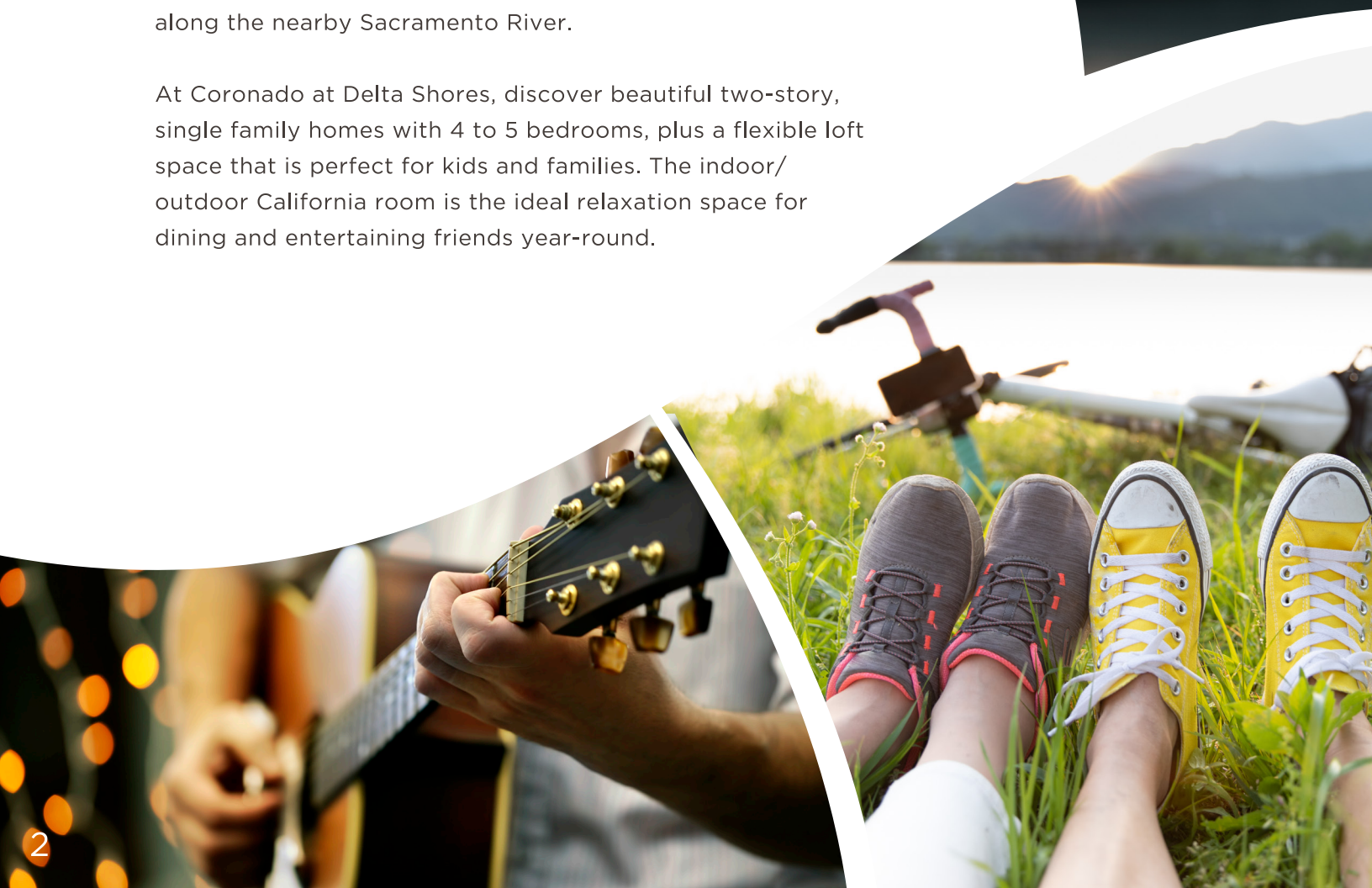


IN THE HEART

Of it All

Coronado at Delta Shores is a family friendly Sacramento neighborhood in the heart of it all. Busy families can enjoy living just minutes from the new Delta Shores shopping center that includes a movie theater, major retail stores and an array of popular restaurants. Explore the outdoors with bike rides along the nearby Sacramento River.

At Coronado at Delta Shores, discover beautiful two-story, single family homes with 4 to 5 bedrooms, plus a flexible loft space that is perfect for kids and families. The indoor/outdoor California room is the ideal relaxation space for dining and entertaining friends year-round.



A TRADITION IN *Homebuilding*

Superior quality, versatile design, uncompromising value, desirable locations and green building are just a few of the defining characteristics Signature Homes has embraced for 40 years.

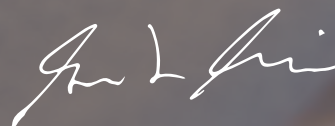
Since its founding in 1983, the Signature Homes name has become synonymous with premier places to live throughout Northern California, including the master-planned community of Ruby Hill in Pleasanton with 850 homes set in a gated, Jack Nicklaus Signature designed golf course community among 2,000 lush acres. These all share one important feature: the company's belief in providing a quality home of enduring appeal.

Our name represents some of the homebuilding industry's best talents in home design, construction, customer service and sales. We believe the details make the difference in making each customer's dream a reality. The Signature team's expertise is reflected in a tradition of homes that are a source of enduring pride to their owners, and neighborhoods that add value to their communities.

With a reputation based on character and a track record of satisfied homeowners, we invite you to create your own Signature moments and memories to last a lifetime, in a new Signature Home.



James C. Ghielmetti
Chief Executive Officer
& Founder



Gary L. Galindo
President





YOUR Home

EXCEPTIONAL EXTERIOR DETAILS

- Discover three well-designed, two-story floor plans with detailed architectural styles of Craftsman, Farmhouse and Prairie
- Designer selected color coordinated exteriors with quality Kelly-Moore® paints welcome you home every day
- Rely on the durability of long-lasting Eagle® concrete tile roofing or custom metal roofing in pre-selected styles and colors (per plan)
- Enjoy the beautiful exterior masonry accents with Creative Mines® Craft Peak Ledge or Split Modular in various styles and colors (per plan)
- Admire the James Hardie® wood-grain fiber cement siding or stucco finish (per plan) that adds character to your home
- Attractive Therma-Tru® paneled front door with Kwikset® hardware makes the perfect first impression
- Spacious two-car garage provides enough space for family vehicles and more
- Insulated steel Clopay® sectional roll-up garage door with automatic Liftmaster® Wi-Fi opener and two transmitters offer security and convenience
- Architecturally inspired carriage lights at the patio and garage door light up your home in style
- Professionally designed front yard landscaping with automatic irrigation provide a welcoming entrance to your property
- Convenient outdoor hose bibs make watering your garden easy

STUNNING HOME INTERIORS

- Minimum nine-foot ceilings on first and second floors keep your home open, airy and bright (per plan)
- Two-panel interior doors with Kwikset® polished chrome hardware add exceptional detail
- Admire hand-laid 12x12 inch Daltile® Arena ceramic tile flooring in four designer colors in the entry, kitchen, laundry and bathrooms
- Quality Mohawk® Top Card II plush carpet in designer colors invites you to take your shoes off and get comfortable
- Exquisite painted stair rails with square, painted balusters and newel posts are the perfect backdrop for family photos (per plan)
- Enjoy the refinement of 5 ½ inch baseboards with smooth finish
- Note the subtle elegance of window stools with eased edge and apron throughout
- Custom bullnose wall corners in living areas provide the polish and finishing touch to your new home

RELISH YOUR NEW KITCHEN

- Custom shaker-style beech cabinetry with natural finish, European 3-way hinges and handsome polished chrome hardware are the ideal elements of your dream kitchen
- Beautiful granite slab countertops throughout kitchen in three designer color choices, with 6-inch backsplash, full height at cooktop
- A convenient kitchen island for entertaining family and friends
- Enjoy the quality Whirlpool® stainless steel appliance package including:
 - 36" electric cooktop
 - 36" undercabinet hood
 - 30" single wall oven
 - Built-in microwave with trim kit
 - Energy Star® dishwasher
- Delight in the superior quality of a Sterling® McAllister 18-gauge stainless steel, single basin, under counter mounted sink
- Moen® single-handle stainless steel pullout faucet blends functionality with good looks
- Depend on your Insinkerator® 1/2 HP Badger 5 disposal for consistent performance
- Generous walk-in pantry provides space to stock up on essentials for your kitchen

A LUXURIOUS PRIMARY BEDROOM SUITE

- Relax in your sumptuous Maax® Exhibit soaking tub and separate shower
- Frameless glass shower door with polished chrome railing keeps the space modern and open
- Sleek E-Stone® solid surface countertops and surrounds with polished edges are functional and beautiful, with two designer colors to choose from
- Lovely square cut, float glass mirror with polished chrome reflect and shine in your new space
- Luxurious dual vanities with Gerber® Luxoval under counter mounted sinks provide an elegant, modern look
- Premium Moen® Cia faucets in polished chrome blend form and function
- Spacious walk-in closet is perfect to organize all your personal belongings

ALL THE EXTRAS

- Your new home is fitted with the latest technology – an Open House® data communications center with 4x10 telecom module and 1x8 video module with all necessary connections to provide TV, telephone and network communications throughout the home
- Media-ready with 4-port faceplate, universal outlets – two CAT6 (voice/data) and two RG6 (video) in great room, primary bedroom and loft
- Charge your electronic devices using two port USB outlet conveniently located at kitchen
- For your convenience, prewired for a ceiling fan at great room
- A laundry room you'll love, with built-in cabinetry and countertops, an electrical hookup for dryer, and optional sink
- Easy-care and beautiful E-Stone® solid surface countertop surrounds and backsplash in all secondary baths and laundry room, with two designer colors to choose from
- Quality polished chrome Moen® Cia faucets in secondary baths provide style and performance
- Decorative Gerber® pedestal sink in powder bath is beautiful and durable (per plan)
- WaterSense certified Gerber® Maxwell elongated bowl toilets in all bathrooms
- Enjoy your indoor/outdoor California room for year-round entertaining



YOUR
Way

ENERGY-EFFICIENT & ENVIRONMENTALLY FRIENDLY

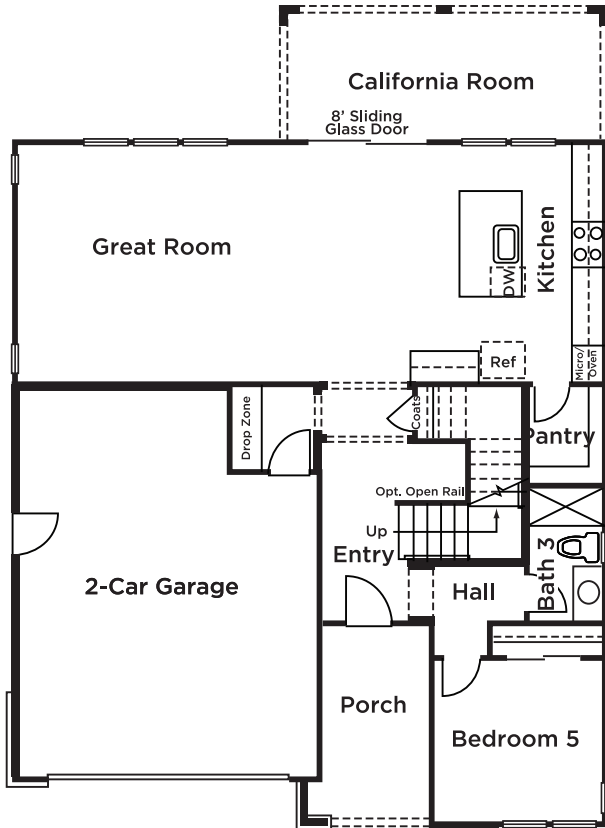
- State-of-the-art Honeywell® T6 PRO Wi-Fi Smart Set Back Thermostat with a zoned system for upstairs and downstairs temperature control (per plan)
- Lennox® furnace and condenser for central heating and air conditioning
- Broan® whole building ventilation system to distribute fresh air into every room
- Energy-efficient Rheem® electric water heater
- Low-E Alpine® windows and sliding glass patio doors save energy with U-Factor .30
- Radiant barrier wrap provides advanced solar protection
- Insulation makes a difference in your utility bills, including R-15-19 insulation for exterior walls, R-30 insulation for floor over garage/ exterior and R-19-30 attic insulation
- High-efficiency home construction
- WaterSense® certified faucets, shower heads and toilets for conservation
- Smoke /carbon monoxide combination detectors to keep your family safe
- Low VOC paint to ensure healthy air quality
- Energy-efficient LED recessed lighting to brighten your home cost effectively
- Electric vehicle capable raceway to sync with the most high-tech transportation

THE Mariposa

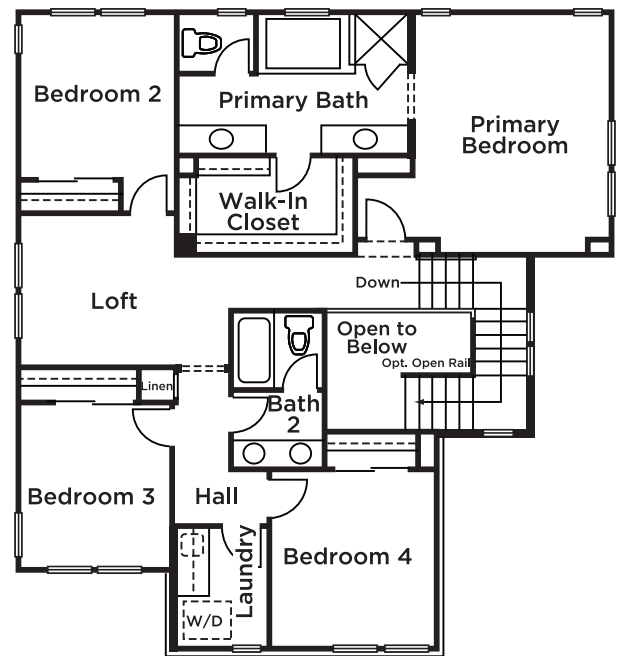
Approx. 2,500 Sq. Ft.

5 Bedrooms | 3 Baths | Loft | California Room

2-Car Garage



FIRST FLOOR



SECOND FLOOR



Elevation A - Craftsman

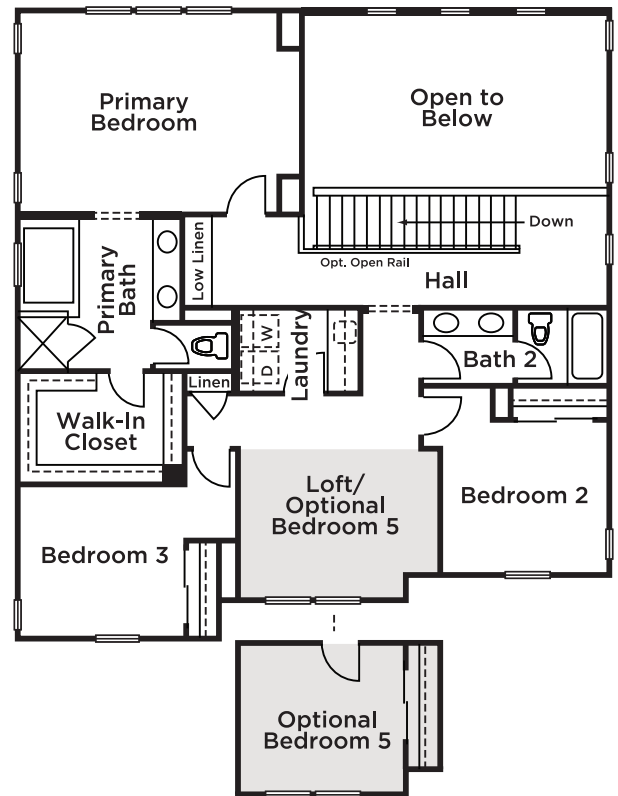
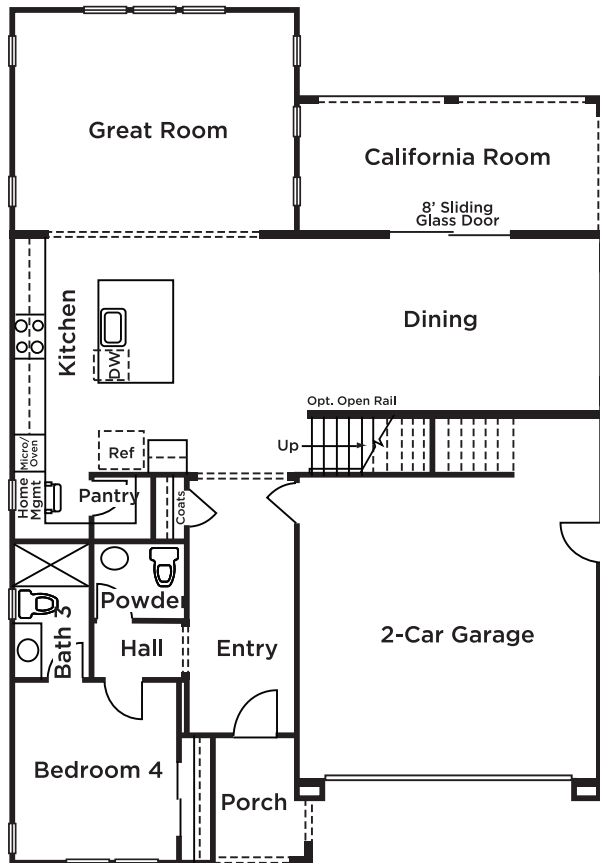


Elevation B - Farmhouse



Elevation C - Prairie

Dashed line denotes optional item in most instances. Floorplan depicts modeled Elevation C. Please refer to plans for other elevations. In an effort to improve its product, Signature Homes reserves the right to change features, prices, options, and specifications without notice. Window placement subject to change based on elevation.



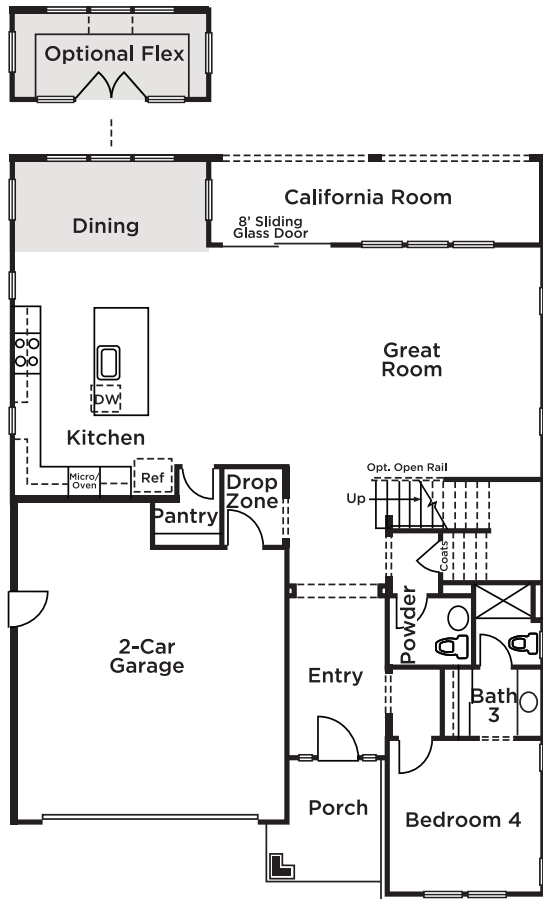
Elevation A - Craftsman



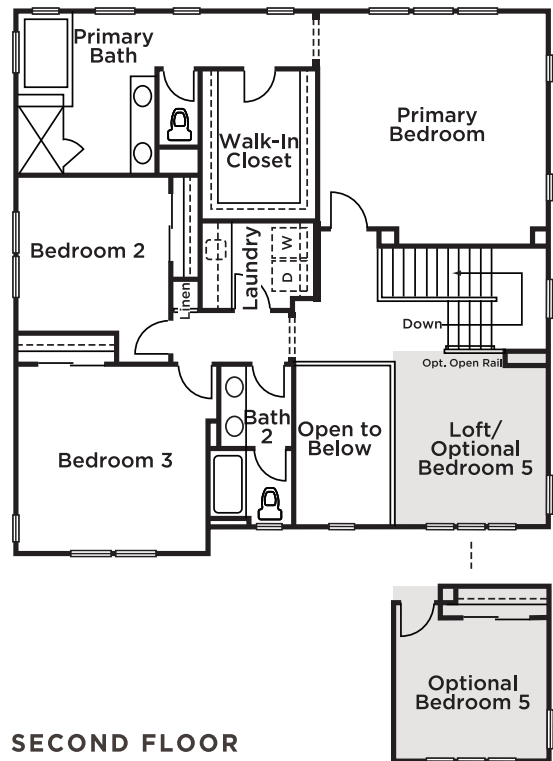
Elevation B - Farmhouse



Elevation C - Prairie



FIRST FLOOR



SECOND FLOOR



Elevation A - Craftsman



Elevation B - Farmhouse



Elevation C - Prairie



SACRAMENTO

California

The vibrant capital city of Sacramento is the fastest-growing major city in California. There is always something to do, from museums and shopping to concerts and outdoor adventures.

Located at the confluence of the Sacramento River and American River, Sacramento is also the ideal place to enjoy the outdoors, from rafting to hiking and biking along the riverfront trails. For more adventures, the city is centrally located within 2 hours of San Francisco and Lake Tahoe. For commuters, there is convenient access to downtown Sacramento via the Regional Transit Light Rail Station, I-5 or Highway 99.

Known as America's Farm-to-Fork Capital, Sacramento is surrounded by more than a million acres of farmland. A year-round growing season ensures that Sacramento chefs and farmers markets have access to fresh agricultural bounty any time of year.

The historic charm of Old Sacramento harkens back to the city's Gold Rush era, with wooden sidewalks, wagon rides, and the iconic Tower Bridge over the Sacramento River.

The perfect hometown for entertainment and sports fans, enjoy Sacramento Kings NBA basketball games or head to the downtown riverside baseball park of San Francisco Giants affiliate team, the Sacramento River Cats.

Welcome home to Sacramento.

CORONADO

at Delta Shores





CORONADO

AT DELTA SHORES





CORONADO

AT DELTA SHORES

8162 Capital Delta Street
Sacramento CA 95832
925.872.3876



sighomes.com