

ACACIA

SIGNATURE
HOMES

ACACIA



EVERYDAY WEEKEND

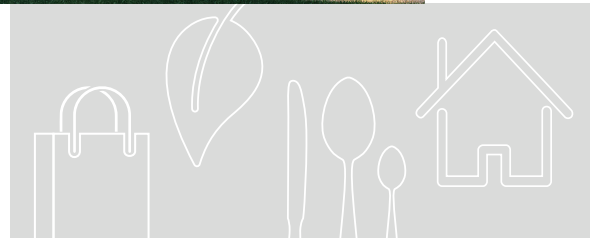
Every day feels like a weekend getaway at Acacia by Signature Homes in Oakley, a charming gated community of spacious homes in a friendly neighborhood with a laid-back vibe. The well-designed, two story homes at Acacia have space for the whole family, including generous great rooms for entertaining and gourmet kitchens with large center islands for family gatherings.

At Acacia, outdoor adventures are close by, including boating and fishing in the San Joaquin Delta, hiking and biking on nearby trails, and picking fresh fruit at nearby orchards and farms. Start your everyday weekend at Acacia in Oakley!





A TRADITION IN HOMEBUILDING



Superior quality, versatile design, uncompromising value, desirable locations and green building are just a few of the defining characteristics Signature Homes has embraced for over 35 years.

Since its founding in 1983, the Signature Homes name has become synonymous with premier places to live throughout Northern California, including the master-planned community of Ruby Hill in Pleasanton with 850 homes set in a gated, Jack Nicklaus Signature designed golf course community among 2,000 lush acres. These all share one important feature: the company's belief in providing a quality home of enduring appeal.

Our name represents some of the homebuilding industry's best talents in home design, construction, customer service and sales. We believe the details make the difference in making each customer's dream a reality. The Signature team's expertise is reflected in a tradition of homes that are a source of enduring pride to their owners, and neighborhoods that add value to their communities.

With a reputation based on character and a track record of satisfied homeowners, we invite you to create your own Signature moments and memories to last a lifetime, in a new Signature Home.

James C. Ghielmetti
Chief Executive Officer
& Founder

SIGNATURE
HOMES

Gary L. Galindo
President





STUNNING HOME INTERIORS

- Nine-foot ceilings on first and second floors keep your home open, airy and bright
- Two-panel interior doors with Kwikset® polished chrome hardware add exceptional detail
- Admire hand-laid 12x12 inch Emser® Havana ceramic tile flooring in four designer colors in the entry, kitchen, powder room, laundry room and all bathrooms (per plan)
- Quality Mohawk® Top Card plush carpet in designer colors invites you to take your shoes off and get comfortable
- Exquisite painted beech wood stair rails with square, painted balusters and newel posts are the perfect backdrop for family photos (per plan)
- Enjoy the refinement of 5 1/2 inch baseboards with smooth finish
- Note the refinement of window stools with eased edge and apron throughout
- Appreciate finishing details like wall caps and apron at pony wall
- Custom bullnose wall corners in living areas provide the finishing touch and elegance to your new home

RELISH YOUR NEW KITCHEN

- Custom Shaker-style beech cabinetry with European 3-way hinges and handsome polished chrome hardware are the ideal elements of your dream kitchen
- Convenient kitchen island is the perfect gathering spot for entertaining family and friends
- Savor the rich, sleek look of beautiful granite slab countertops in three designer colors, with 6-inch backsplash, full height at cooktop
- Enjoy the quality Whirlpool® stainless steel appliance package including:
 - 30" gas range
 - Microwave/ hood combo
 - Energy Star® Dishwasher
- Delight in the superior quality of a Sterling® McAllister 18-gauge stainless steel, single basin, under counter mounted sink
- Moen® Method single handle stainless steel pullout faucet blends functionality with good looks
- Depend on your Insinkerator® 1/2 HP Badger 5 disposal for consistent performance
- Generous walk-in pantry provides space to stock up on essentials for your kitchen (per plan)

In an effort to improve its product, Signature Homes reserves the right to change features, prices, options, and specifications without notice. 🏠

EXCEPTIONAL EXTERIOR DETAILS

- Discover three well-designed, two-story floor plans with detailed architectural styles of Early California, Craftsman and Prairie
- Designer selected color coordinated exteriors with quality Kelly-Moore® paints welcome you home every day
- Rely on the durability of long-lasting Eagle® concrete tile roofing in pre-selected styles and colors (per plan)
- Enjoy the beautiful exterior masonry with El Dorado Stone® in various styles and colors (per plan)
- Admire the James Hardie® wood-grain fiber cement siding or stucco finish (per plan) that adds character to your home
- Attractive paneled Therma Tru® front door with Kwikset® Venetian Bronze hardware makes the perfect first impression
- Spacious two car garages provide enough space for family vehicles and more
- Insulated steel DoorLink Manufacturing® sectional roll-up garage door with automatic Liftmaster® Wi-Fi opener and two transmitters offer security and convenience
- Architecturally inspired carriage lights at the patio and garage door light up your home in style
- Professionally designed front yard landscaping with automatic irrigation provide a welcoming entrance to your property
- Convenient outdoor hose bibs make watering your garden easy

A LUXURIOUS PRIMARY BEDROOM SUITE

- Relax in your sumptuous soaking tub and separate shower
- Frameless glass shower door with polished chrome railing keeps the space modern and open
- Sleek E-Stone® solid surface countertops and surrounds with polished edges are functional and beautiful
- Lovely square cut, float glass mirror with polished chrome reflect and shine in your new space
- Luxurious dual vanities with Gerber® Luxoval Petite under counter mounted sinks provide an elegant, modern look
- Premium Moen® Genta faucets in polished chrome blend form and function
- Spacious walk-in closet is perfect to organize all your personal belongings
- WaterSense Certified Gerber® Maxwell elongated bowl toilet

ALL THE EXTRAS

- Your new home is fitted with the latest technology – an Open House® data communications center with 4x10 Telecom Module and 1x8 Video Module with all necessary connections to provide TV, telephone and network communications throughout the home
- Media-ready with 4-port faceplate, universal outlets – two CAT-6 (voice/data) and two RG6 (video) in Great Room, Primary Bedroom and Loft (per plan) plus a 2-port outlet with one CAT-6 port and one RG-6 in the office (per plan)
- Charge your electronic devices using two port USB outlet conveniently located at Kitchen
- Easy-care and beautiful E-Stone® solid surface countertop surrounds and backsplash in all secondary baths and laundry room, with two designer colors to choose from
- Quality polished chrome Moen® faucets in secondary baths provide style and performance
- Decorative Gerber® pedestal sink in Powder Bath is beautiful and durable (per plan)
- Enjoy spacious closets for storage throughout your new home
- For your convenience, prewired for a ceiling fan at Great Room
- A laundry room you'll love, with electrical hookup for dryer

ENERGY-EFFICIENT & ENVIRONMENTALLY FRIENDLY

- State-of-the-art Honeywell® T6 Lyric PRO Wi-Fi Set Back Thermostat with a zoned system for upstairs and downstairs temperature control
- Lennox® furnace and condenser for central heating and air conditioning
- Broan® Energy Recovery Ventilation System with ERV Controller for whole house filtered fresh air intake
- Rheem® 80 gallon electric heat pump water heater
- Low-E Alpine® windows and sliding glass patio doors save energy with U-Factor .28-.30
- Insulation makes a difference in your utility bills, including R-13-19 insulation for exterior walls, R-19 insulation for floor over garage/ exterior, R-30 attic insulation and R-13 below roof deck (vented)
- High-efficiency home construction
- WaterSense® Certified faucets, shower heads and toilets for conservation
- Smoke /carbon monoxide combination detectors to keep your family safe
- Low VOC paint to ensure healthy air quality
- Energy-efficient LED recessed lighting to brighten your home cost effectively
- Electric Vehicle Capable to sync with the most high-tech transportation

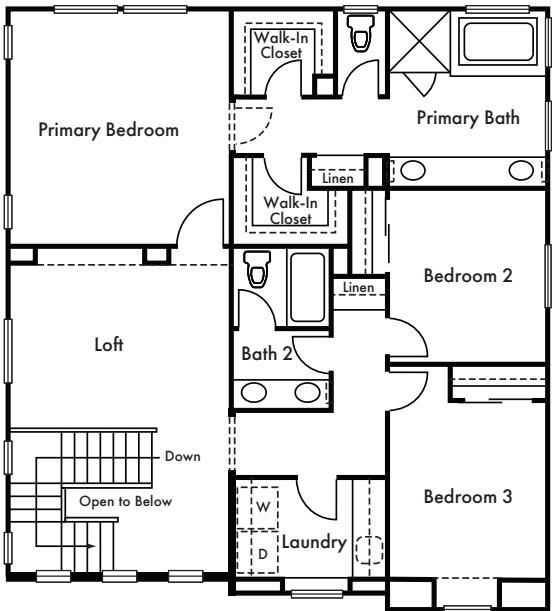
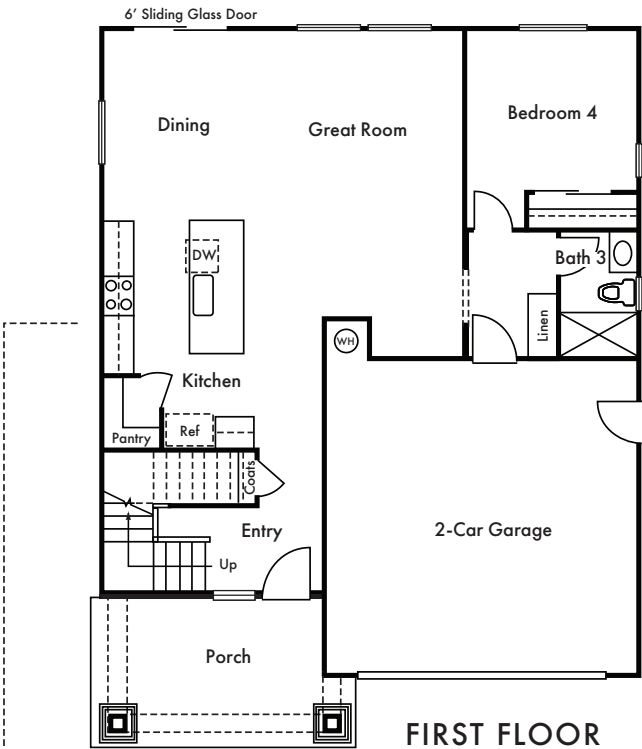


YOUR WAY

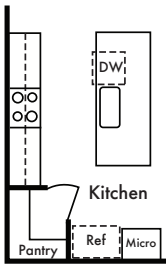


RESIDENCE ONE

Approx. 2,165 Sq. Ft. | 4 Bedrooms | 3 Baths | Loft | 2-Car Garage



Optional Kitchen
(With Upgraded
Appliance Package Only)



ELEVATION A

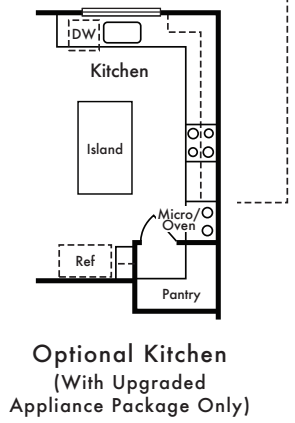
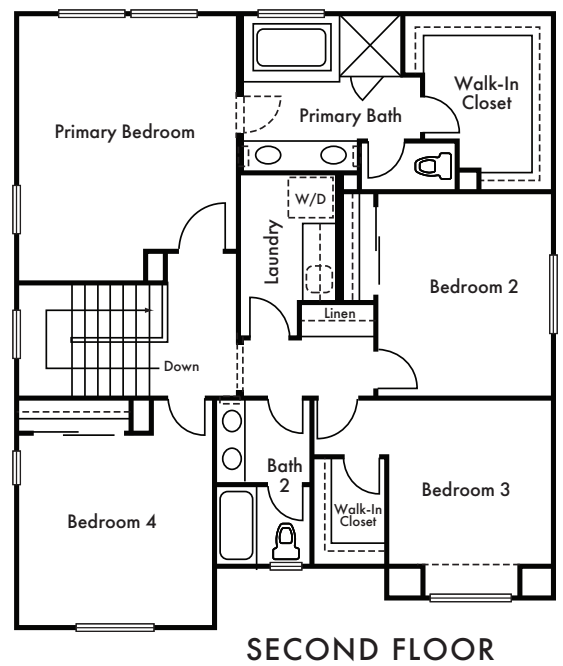
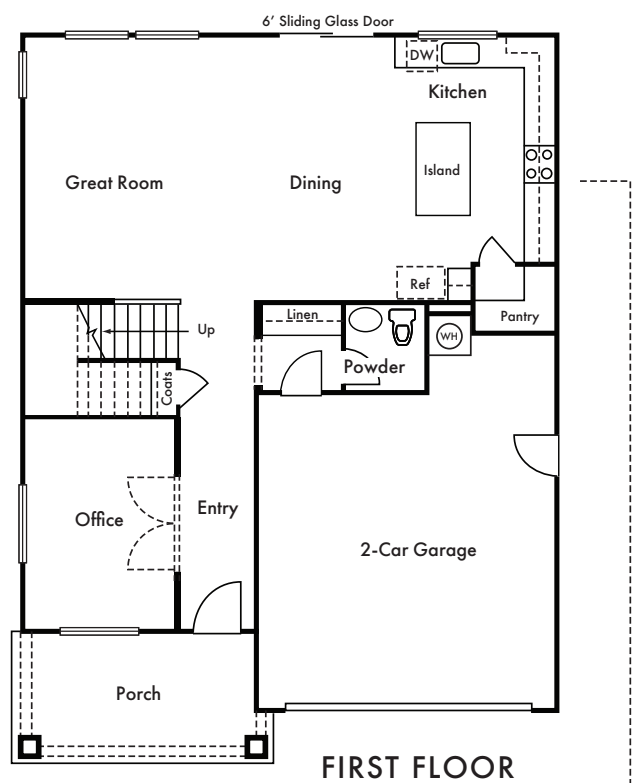
ELEVATION B

ELEVATION C

Floorplan modeled depicts Elevation B. Window locations, wall sizes and square footage may vary per elevation. Please refer to plans or other elevations. In an effort to improve its product, Signature Homes reserves the right to make changes without notice. Floorplans are different than the models. See sales associate for details. 🏠

RESIDENCE TWO

Approx. 2,275 Sq. Ft. | 4 Bedrooms | 2.5 Baths | Office | 2-Car Garage

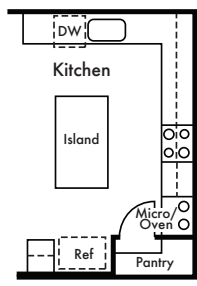
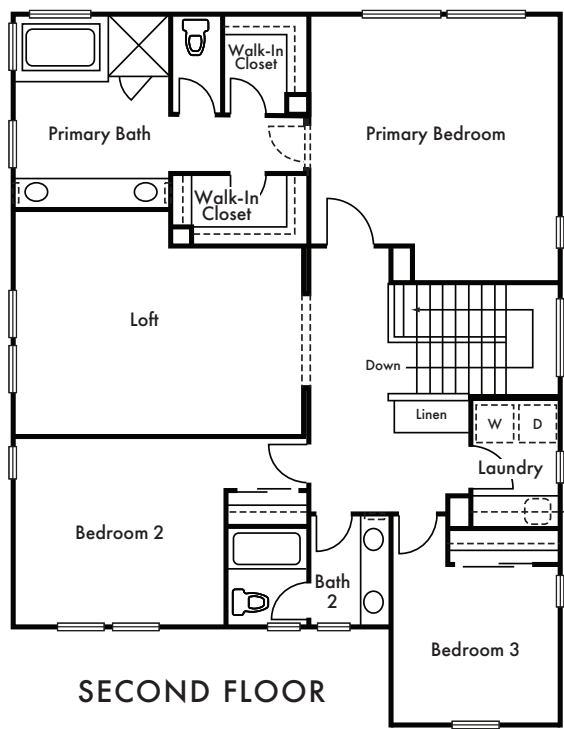
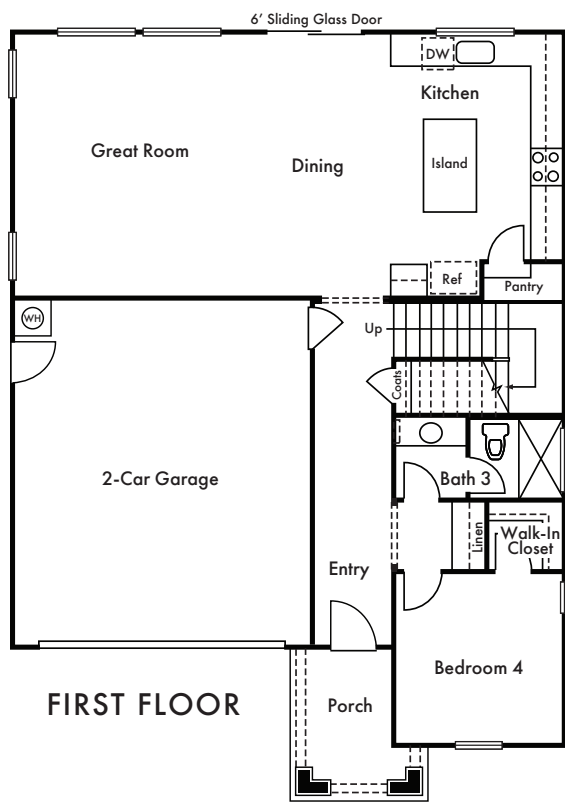


Floorplan modeled depicts Elevation A. Window locations, wall sizes and square footage may vary per elevation. Please refer to plans or other elevations. In an effort to improve its product, Signature Homes reserves the right to make changes without notice. Floorplans are different than the models. See sales associate for details. 🏠



RESIDENCE THREE

Approx. 2,540 Sq. Ft. | 4 Bedrooms | 3 Baths | Loft | 2-Car Garage



Optional Kitchen
(With Upgraded
Appliance Package Only)



ELEVATION A



ELEVATION B



ELEVATION C

Floorplan modeled depicts Elevation C. Window locations, wall sizes and square footage may vary per elevation. Please refer to plans or other elevations. In an effort to improve its product, Signature Homes reserves the right to make changes without notice. Floorplans are different than the models. See sales associate for details. 🏠

OAKLEY CALIFORNIA



Acacia by Signature Homes is located in the quaint city of Oakley in Contra Costa County at the fork of the Sacramento and San Joaquin rivers. Offering a small-town country feel just 55 miles from San Francisco, commuting is convenient with easy access to major freeways, Highway 4 and BART. Oakley features plenty of shopping, a downtown business district, quality schools and abundant community parks and sports fields that are ideal for active families.

Nature and open space are a big part of the relaxed lifestyle in Oakley, where boating, fishing, hiking and biking are popular along nearby Big Break Shoreline, San Joaquin Delta and Delta De Anza Regional Trail. Local family-friendly activities are plentiful, and nearby farms are well known for the freshest u-pick fruit including peaches, cherries and berries. Hometown Oakley is the perfect place to put down roots and make yourself at home!

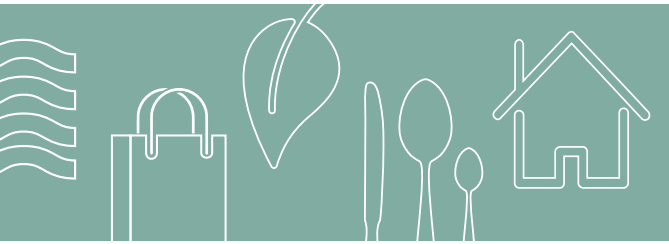


ACACIA



Map not to scale. This site plan is not intended as a legal description of property. The depiction of property boundaries is meant to serve as a general guide. Lot descriptions are available for your inspection in Sales Office. North directional arrow refers to map homesite placement. 🏠

AROUND OAKLEY



MAP NOT TO SCALE

ACACIA

833 Hardcastle Ranch Road
Oakley, CA 94561
925.839.4013



sighomes.com

*Prices, terms and availability subject to change without notice. See sales associate for details. DRE License #01885946. 4/10/23. 