



BRISTOL

SIGNATURE
HOMES



SONOMA COUNTY STYLE

Savor the Sonoma County lifestyle at Bristol, a new home neighborhood with a relaxed wine country vibe, featuring two-story home designs in a variety of architectural styles. Discover modern homes with generous, open-concept spaces, gourmet kitchens, spacious great rooms, luxurious primary suites and indoor/ outdoor living areas to enjoy California at its best.

Become a part of the family-friendly community of Rohnert Park near schools, parks, Sonoma State University and the Green Music Center. Enjoy a work-life balance with ready access to the SMART Train for convenient commuting.

Appreciate nature and the outdoors with nearby parks and biking trails, including picturesque Roberts Lake and Crane Creek Regional Park, surrounded by panoramic wine country hillsides.

Relish your Sonoma County lifestyle at Bristol.





BRISTOL



A TRADITION IN HOMEBUILDING

Superior quality, versatile design, uncompromising value, desirable locations and green building are just a few of the defining characteristics Signature Homes has embraced for over 35 years.

Since its founding in 1983, the Signature Homes name has become synonymous with premier places to live throughout Northern California, including the master-planned community of Ruby Hill in Pleasanton with 850 homes set in a gated, Jack Nicklaus Signature designed golf course community among 2,000 lush acres. These all share one important feature: the company's belief in providing a quality home of enduring appeal.

Our name represents some of the homebuilding industry's best talents in home design, construction, customer service and sales. We believe the details make the difference in making each customer's dream a reality. The Signature team's expertise is reflected in a tradition of homes that are a source of enduring pride to their owners, and neighborhoods that add value to their communities.

With a reputation based on character and a track record of satisfied homeowners, we invite you to create your own Signature moments and memories to last a lifetime, in a new Signature Home.

James C. Ghielmetti
Chief Executive Officer
& Founder

Gary L. Galindo
President





STUNNING HOME INTERIORS

- Nine-foot ceilings on first and second floors keep your home open, airy and bright
- Two-panel interior doors with Kwikset® polished chrome hardware add exceptional detail
- Admire hand-laid 12 x 12 inch Dal Tile® Sandalo ceramic tile flooring in four designer colors in the entry, kitchen, powder room and all bathrooms
- Quality Mohawk® Top Card style plush carpet in designer colors invites you to take your shoes off and get comfortable
- Exquisite painted beech wood stair rails with square, painted balusters and newel posts are the perfect backdrop for family photos (per plan)
- Enjoy the refinement of 5 ½ inch baseboards with smooth finish
- Note the refinement of window stools with eased edge and apron throughout
- Appreciate finishing details like wall caps and apron at pony wall
- Custom bullnose wall corners in living areas provide the finishing touch and elegance to your new home

TO DELIGHT THE CHEF

- Custom Shaker-style stained beech wood cabinetry with European 3-way hinges and handsome polished chrome hardware are the ideal elements of your dream kitchen
- Savor the rich, sleek look of beautiful granite slab countertops in three colors, throughout kitchen with eased edge detail, 6-inch backsplash, and full height at cooktop
- A convenient kitchen island for entertaining family and friends
- Enjoy the modern Whirlpool® stainless steel appliance package including:
 - 30 inch gas cooktop
 - 30 inch cooktop hood
 - 30-inch single wall oven
 - Built-in microwave with trim kit
 - Energy Star® dishwasher
- Relish the superior Sterling® McAllister 18-gauge stainless steel, single basin, under-counter mounted sink
- Moen® Method stainless steel pullout faucet blends functionality with good looks
- Depend on your Insinkerator® 1/2 HP Badger 5 disposal for consistent performance
- Generous walk-in pantry provides space to stock up on essentials for your kitchen

YOUR HOME

EXCEPTIONAL EXTERIOR DETAILS

- Discover three well-designed two-story floor plans with detailed architectural styles of Craftsman, Modern Farmhouse and Modern Prairie
- Designer selected color coordinated exteriors with quality Kelly-Moore® paints welcome you home every day
- Rely on the durability of long-lasting Certainteed® asphalt shingle roofing or Taylor Metal Sales 24 gauge metal roofing in pre-selected styles and colors (per plan)
- Enjoy the beautiful exterior masonry in various Creative Mines® styles and colors (per plan)
- Admire the James Hardie® wood-grain fiber cement siding and stucco finish (per plan) that adds character to your home
- Attractive paneled Therma Tru® front door with Kwikset® Camino venetian bronze hardware makes the perfect first impression
- Spacious two car garages provide enough room for family vehicles and more
- Insulated steel Wayne Dalton® sectional roll-up garage door in pre-selected styles (per plan) with Liftmaster® Wi-Fi opener and two transmitters offer security and convenience
- Architecturally inspired carriage lights at the patio and garage doors light up your home in style
- Professionally designed drought-tolerant front yard landscaping provides the fresh touch to your property
- Convenient outdoor hose bibs make watering your garden easy

A LUXURIOUS PRIMARY BEDROOM SUITE

- Relax in your sumptuous soaking tub and separate shower
- Frameless clear glass shower door with polished chrome railing keeps the space modern and open
- Sleek E-Stone® solid surface countertops, backsplash and shower surround with eased edge detail are functional and beautiful
- Lovely square cut, float glass mirror with polished chrome reflect and shine in your new space
- Luxurious dual vanities with Gerber® Luxoval Petite undercounter sinks provide an elegant, modern look
- Premium Moen® Genta faucets in polished chrome blend form and function
- Spacious walk-in closet is perfect to organize all your personal belongings
- WaterSense Certified Gerber® Maxwell elongated bowl toilet

ALL THE EXTRAS

- Your new home is fitted with the latest technology – an Open House® data communications center with 4x10 Telecom Module and 1x8 Video Module with all necessary connections to provide TV, telephone and network communications throughout the home
- Media-ready with 4 port universal outlets, including two CAT6 (voice/data) and two RG6 (video) ports in the Great Room, Master Bedroom and Loft (per plan).
- Charge your electronic devices using two port USB outlet conveniently located at Kitchen
- Easy-care and beautiful E-Stone® solid surface countertop surrounds and backsplash in all secondary baths and laundry room, with two designer colors to choose from
- Gerber® Luxoval Petite under-counter mounted sinks and polished chrome Moen® Genta faucets in secondary baths give a sleek contemporary look
- Discover spacious closets for storage throughout your new home
- For your convenience, prewired for a ceiling fan at Great Room
- A laundry room you'll love, with electrical hookup for dryer



YOUR WAY

ENERGY EFFICIENT & ENVIRONMENTALLY FRIENDLY

- State-of-the-art Honeywell® T6 PRO Set Back Thermostat with a zoned system for upstairs and downstairs temperature control
- Lennox® furnace and condenser for central heating and air conditioning
- Broan® whole building ventilation system to distribute fresh air into every room
- Energy-saving Navien® tankless water heater
- Water Sense® Certified faucets, shower heads and toilets for conservation
- Radiant barrier roof sheathing provides advanced solar protection
- Low-E Alpine® windows and sliding glass patio doors helps keep the house cool in summer and warm in winter
- Insulation makes a difference in your utility bills, including R-13-19 insulation for exterior walls, R-22-38 attic insulation and R-19 insulation for floor over garage/ exterior
- High-efficiency home construction
- Smoke /carbon monoxide combination detectors to keep your family safe
- Low VOC paint to ensure healthy air quality
- Energy-efficient LED recessed lighting to brighten your home cost effectively
- Electric Vehicle Capable to sync with the most high-tech transportation

RESIDENCE ONE



Approx. 2,258 Sq. Ft. | 3 Bedrooms | 2.5 Baths | Loft | Study | California Room
2-Car Garage | Optional Bedroom 4 with Full Bath 3 | Optional Bedroom 5



ELEVATION A



ELEVATION B



ELEVATION C

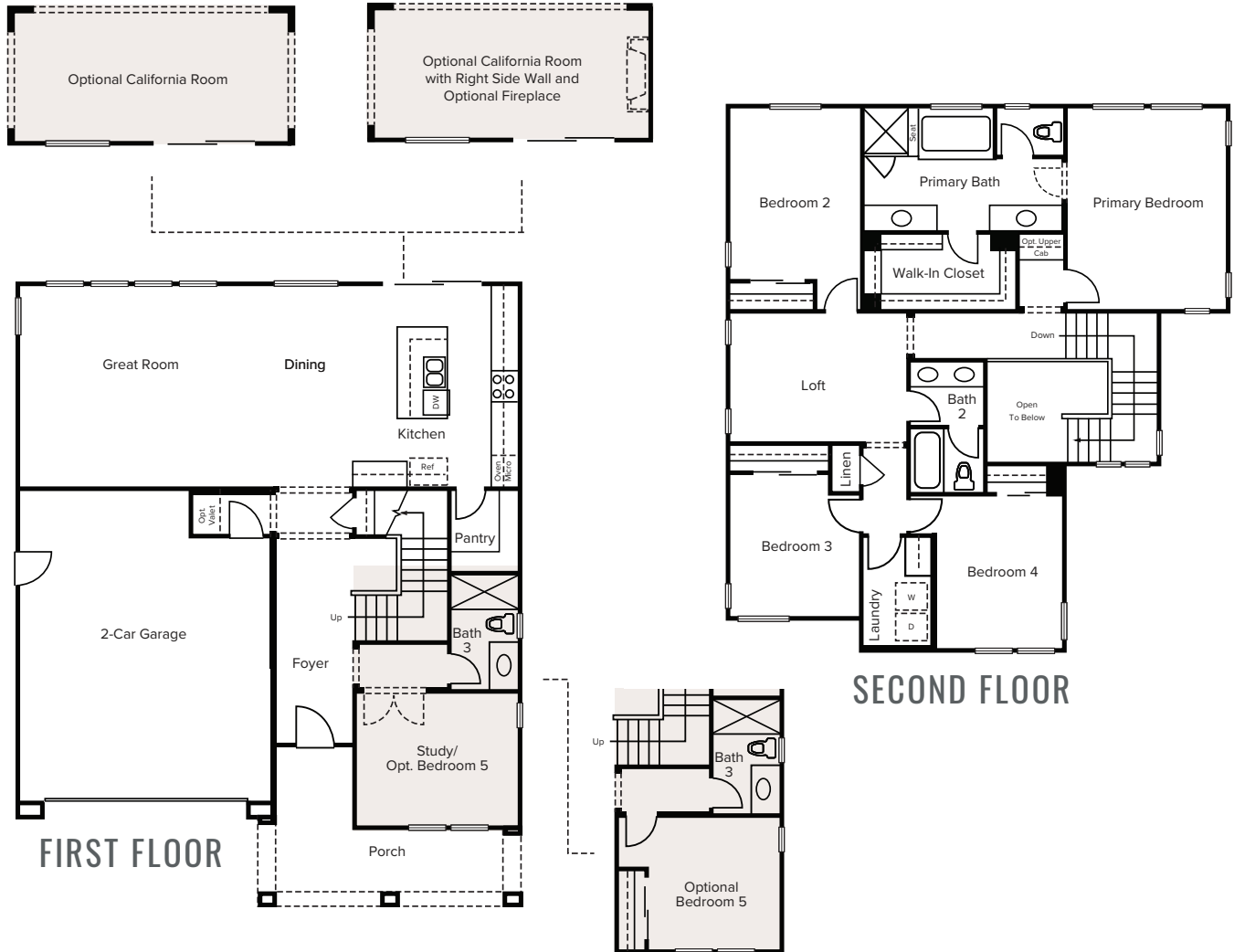


Dashed line denotes optional item in most instances. Floorplan modeled depicts Elevation B. Please refer to plans for other elevations. Floorplans are artist's conception and are not to scale. Window locations, wall sizes and square footage may vary per elevation. In an effort to improve its product, Signature Homes reserves the right to make changes without notice. See sales associate for details. 🏠

RESIDENCE TWO



Approx. 2,488 Sq. Ft. | 4 Bedrooms | 3 Baths | Study | Loft
2-Car Garage | Optional Bedroom 5 | Optional California Room



ELEVATION A



ELEVATION B



ELEVATION C

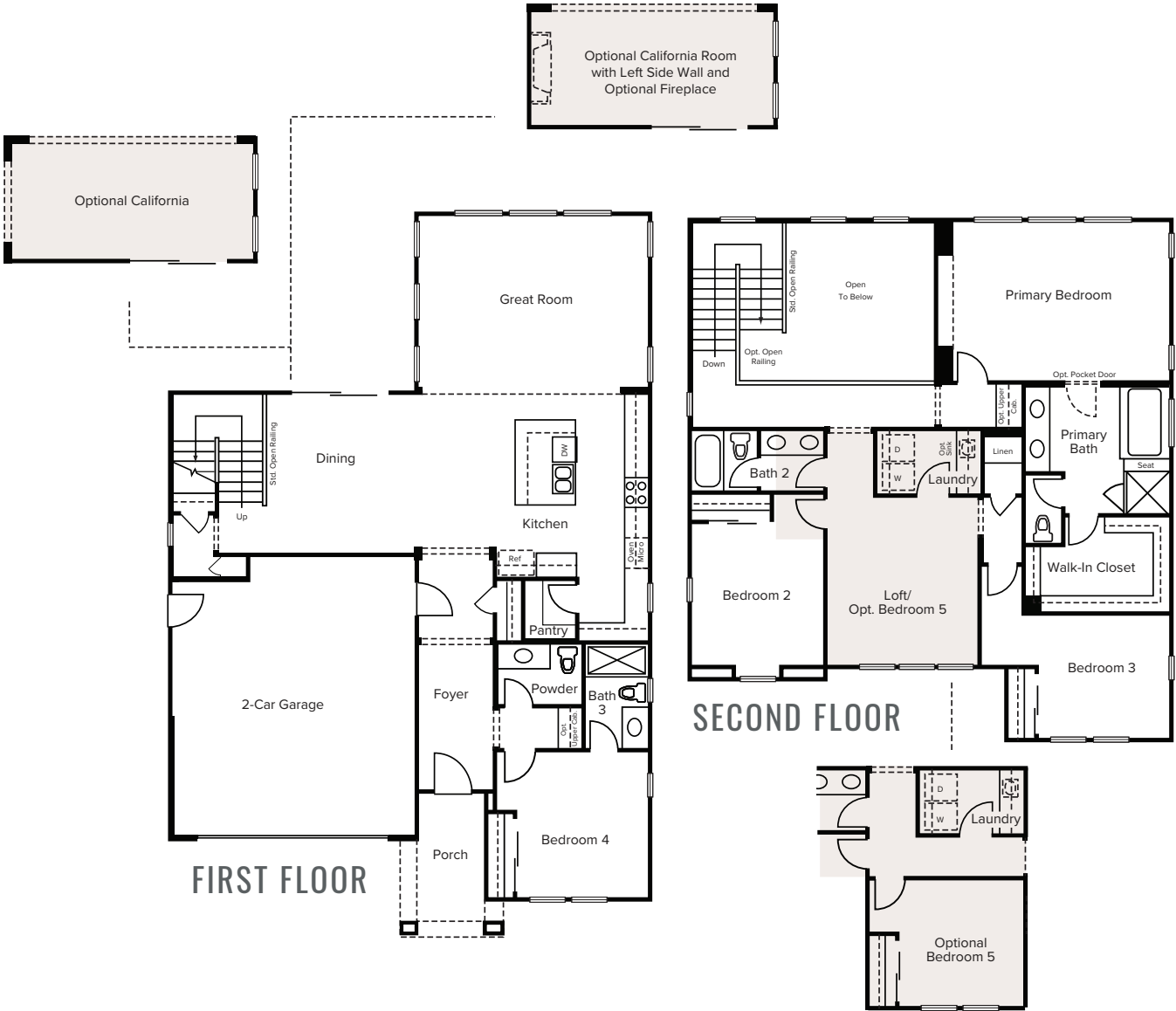


Dashed line denotes optional item in most instances. Floorplan modeled depicts Elevation B. Please refer to plans for other elevations. Floorplans are artist's conception and are not to scale. Window locations, wall sizes and square footage may vary per elevation. In an effort to improve its product, Signature Homes reserves the right to make changes without notice. See sales associate for details. 🏠

RESIDENCE THREE



Approx. 2,666 Sq. Ft. | 4 Bedrooms | 3.5 Baths | Loft
2-Car Garage | Optional Bedroom 5 | Optional California Room



ELEVATION A



ELEVATION B



ELEVATION C



Dashed line denotes optional item in most instances. Floorplan modeled depicts Elevation B. Please refer to plans for other elevations. Floorplans are artist's conception and are not to scale. Window locations, wall sizes and square footage may vary per elevation. In an effort to improve its product, Signature Homes reserves the right to make changes without notice. See sales associate for details. 🏠

ROHNERT PARK... A THRIVING COMMUNITY

Located just 45 minutes north of the Golden Gate Bridge, Rohnert Park is a fast-growing city in Sonoma County. The SMART Train (Sonoma-Marín Area Rail Transit) makes commuting easy and convenient.

Rohnert Park is home to Sonoma State University, ranked in the top 20 public schools in the nation by U.S. News & World Report and known for the nation's only Wine Business Institute. The Green Music Center includes the acoustically-perfect Weill Hall, where audiences have enjoyed world-class performances by Yo Yo Ma, the Vienna Philharmonic Orchestra, Josh Groban and many more.



Sonoma County wine country living provides ready access to world-famous wineries and restaurants, with over 400 wineries including nearby favorites St. Francis Winery & Vineyards, Matanzas Creek Winery and Iron Horse Vineyards.

Neighboring destinations also include the Charles Schulz Museum, the Luther Burbank Home and Gardens, Crane Creek Regional Park and Trione-Annadel State Park for outdoor recreation, hiking and biking.

Discover all the best that Sonoma County, California has to offer when you make your home at Bristol in Rohnert Park.



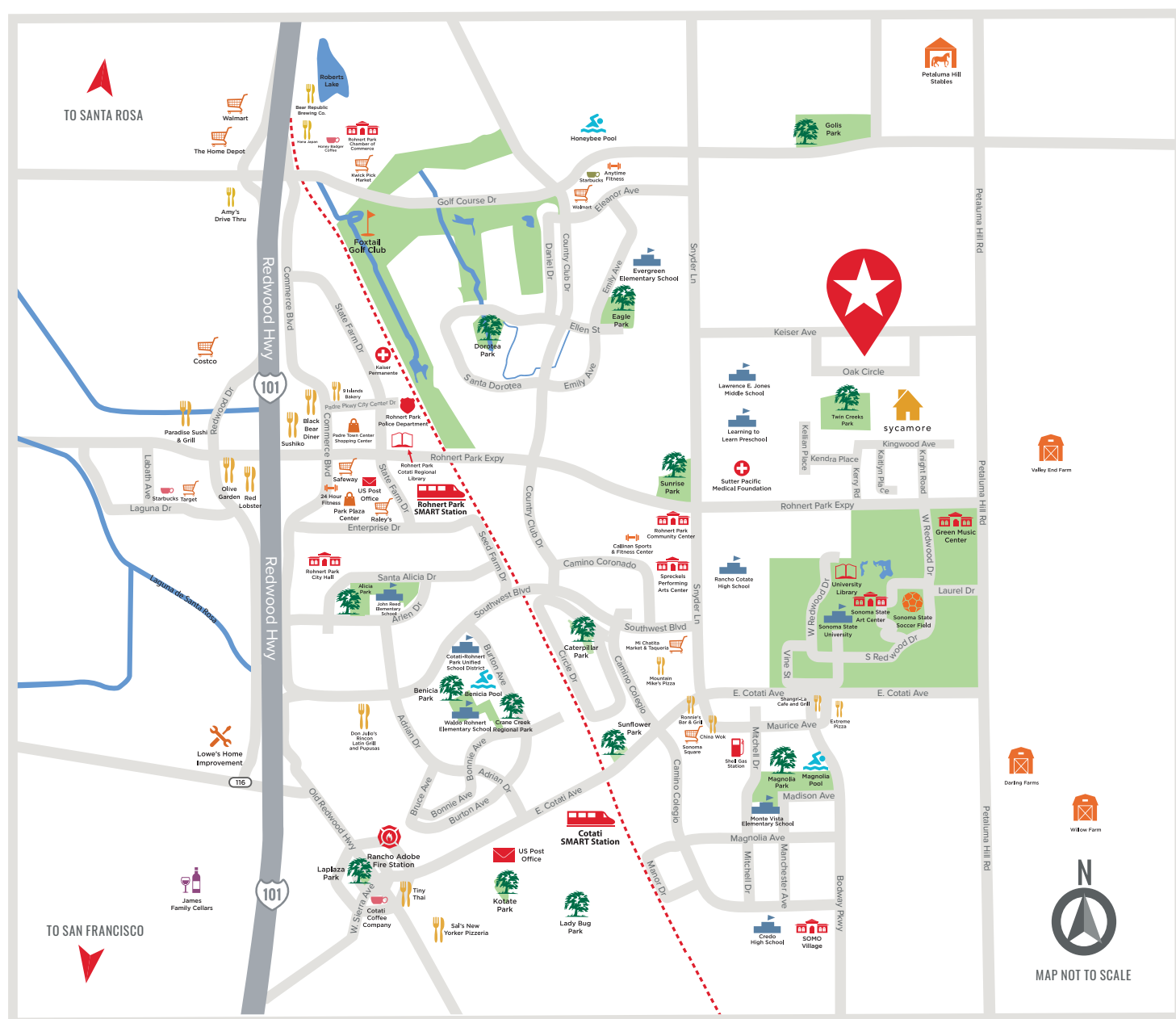
*Map not to scale.

This site plan is not intended as a legal description of the property. The depiction of property boundaries is meant to serve as a general guide. Lot descriptions are available for your inspection in the Sales Office. 🏠

BRISTOL



AROUND ROHNERT PARK





BRISTOL

1424 Oak Circle
Rohnert Park, CA 94928
707.656.4627



SIGNATURE
HOMES

sighomes.com

*Prices, terms and availability subject to change without notice. See sales associate for details. DRE License #01885946. 6/8/21. 