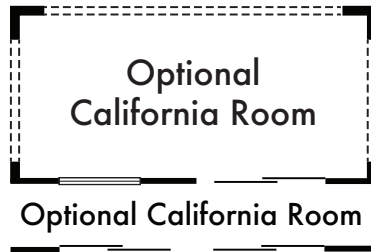


# BRISTOL

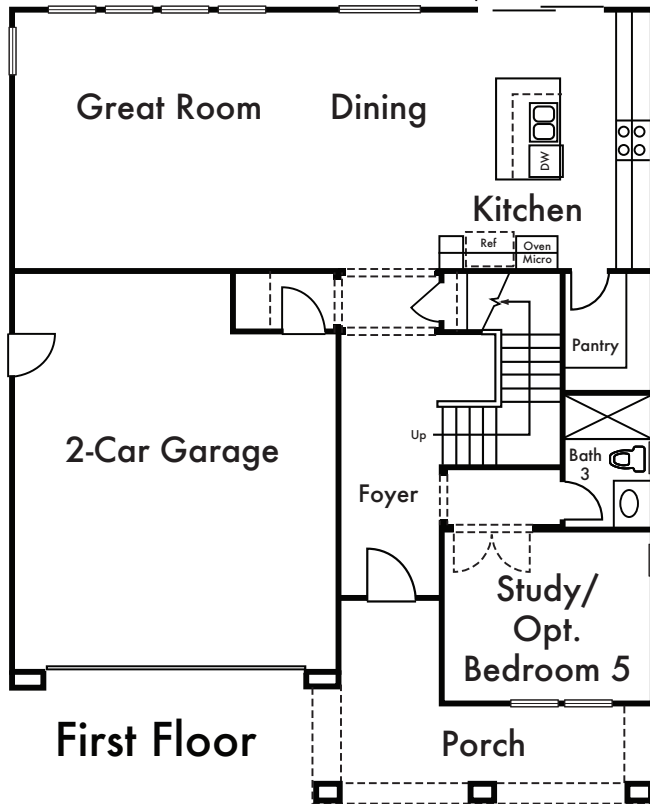
Preliminary

## RESIDENCE 2

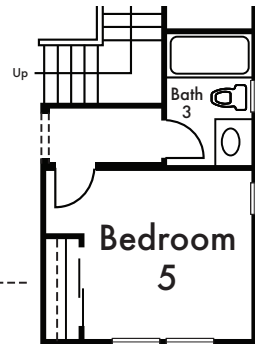
Approx. 2,488 Sq Ft  
4 Bed  
3 Bath



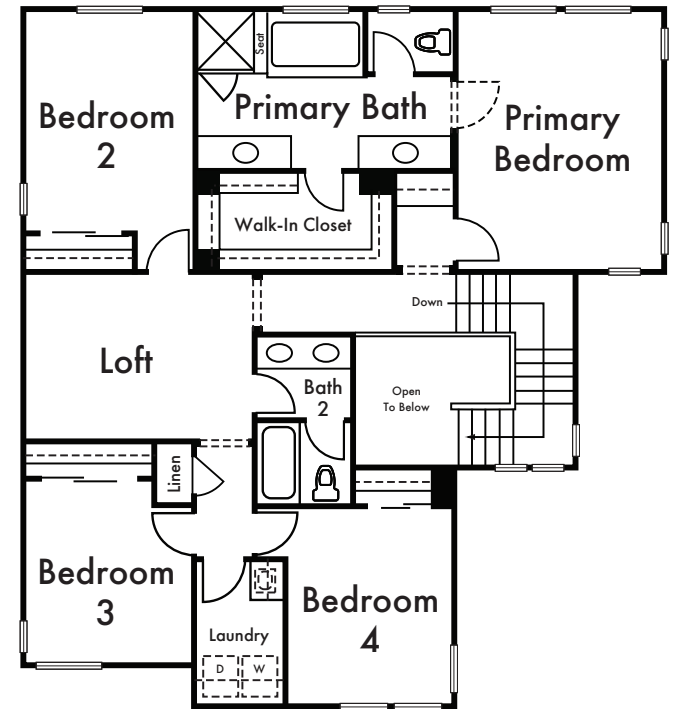
Two Optional 8 Ft Sliding Glass Doors at California Room



Optional California Room With Right Side Wall And Optional Fireplace



Optional Bedroom 5 At Study



Second Floor

\*Floorplan depicts modeled Elevation C. Please refer to plans for other elevations.